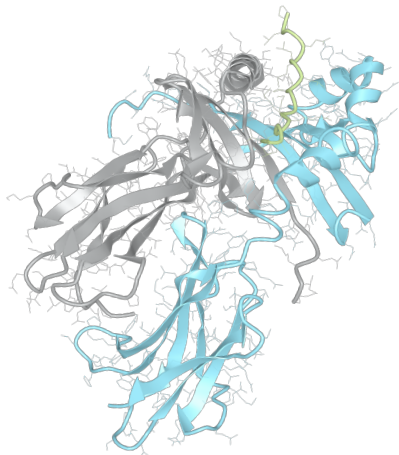


Product datasheet



sHLA– DQB1*06:02 DQA1*01:02

DQB1*0602, DQB10602, DQB1*06, DQB06, DQ6
DQA1*0102, DQA10102, DQA1*01, DQA01

Serological Name	DQ6
Peptide Load	Endogenous
Modification	Unmodified
Conjugation	Unconjugated
SKU	DQB10602/DQA10102

Product Description

Allele Name	DQA1*01:02 DQB1*06:02
HLA Class	HLA Class II
HLA Gene Locus	HLA-DQ
Alternative Allele Name A Chain	DQA1*0102, DQA10102, DQA1*01, DQA01
Alternative Allele Name B Chain	DQB1*0602, DQB10602, DQB1*06, DQB06, DQ6
Description	Recombinant, truncated Class II soluble Human Leukocyte Antigen (sHLA), naturally folded and glycosylated, loaded with endogenous peptides.
Serological Name	DQ6
Serological Split	DQ1
Allele Frequency [World Population]	
A chain	15.0%
B chain	7.8%

Associated products

[DQB10602/DQA10102bio](#)
[DQB10602/DQA10102pe](#)

Product Specification

Product name	HLA-DQB1*06:02/DQA1*01:02
HLA Species	Human
Host Cell Line Species	Mouse
Clone Designation	EP364-H12
Tail Specification	ZP
Peptide Load	Endogenous
Modification	Unmodified
Conjugation	Unconjugated
Complexity	Monomer
Protein Format	Recombinant, truncated, zipper-stabilized, soluble, non-modified, non-labeled, endogenously loaded
Storage Temperature	4°C (This product should be stored undiluted)
Form	Liquid
Concentration	1000.0 µg/ml
Formulation	PBS/0.02% Sodium Azide
pH	7.4
Purification Method	Affinity Chromatography
Grade	Research Use Only [RUO]
Authentication Verification	Sequence Based Typing

Protein Sequences

Alpha Chain Sequence	EDIVADHVAS CGVNLYQFYG PSGQYTHEFD GDEQFYVDLE RKETAWRWPE FSKFGGFDPQ GALRNMVAVK HNLNIMIKRY NSTAATNEVP EVTVFSKSPV TLGQPNTLIC LVDNIFPPVV NITWLSNGQS VTEGVSETSF LSKSDHSFFK ISYLTFLPSA DEIYDCKVEH WGLDQPLLKH WEPEIPAPMS EVDGGGGGAQ LEKELQALEK ENAQLEWELQ ALEKELAQ
-----------------------------	---

Beta Chain Sequence	RDSPEDFVFQ FKGMCYFTNG TERVRLVTRY IYNREEYARF DSDVGVYRAV TPQGRPDAEY WNSQKEVLEG TRAEALDTCR HNYEVAFRGI LQRRVEPTVT ISPSRTEALN HHNLLVCSVT DFYYPGQIKVR WFRNDQEETA GVVSTPLIRN GDWTFQILVM LEMTPQRGDV YTCHVEHPSL QSPTTVEWRA QSESAQSKVD GGGGAQLKK KLQALKKKNA QLKWKLQALK KKLAQ
----------------------------	---

Related Products

[DQB10603/DQA10102](#)
[DQB10601/DQA10102](#)
[DQB10301/DQA10201](#)
[DQB10602/DQA10102](#)

Applications

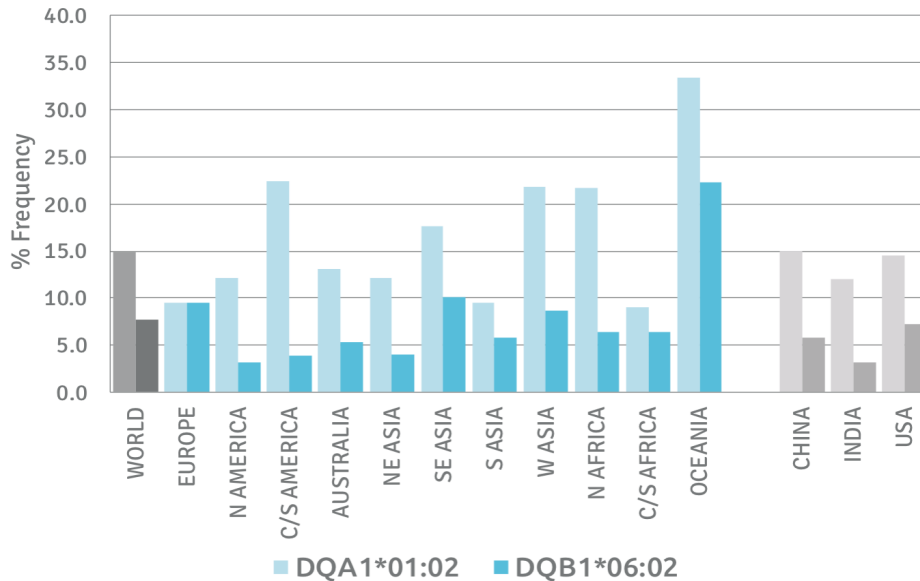
HLA Sandwich ELISAs
 HLA Direct ELISAs
 HLA-Sera Antibody Assays
 HLA Controls in ELISA Assays
 HLA Assay Standards
 HLA Blocking Assays
 HLA Neutralizing Assays
 HLA Competition Assays
 HLA Bead Assays
 HLA Immunization Procedures

Recommended Antibodies

-

Allele Frequency

Worldwide Allele Frequency



Please note:

ALL PRODUCTS ARE FOR RESEARCH USE ONLY. NOT FOR COMMERCIAL USE IN DIAGNOSTIC PROCEDURES.
 For more information, please visit our Policies section on our website. For licensing inquiries, please contact

licensing@hlaprotein.com

HLA Protein
 PURE PROTEIN LLC

Eplet Assignments

DQB1*06:02

Eplet	Polymorphic Residues	Antibody Reactivity
3S	3S	
9F	9F	
13GM	13G14M	
23R	23R	
26L	26L	
37YA	37Y38A	
45G	45G	
45GV	45G46V	Yes
46VY	46V 52P 28T	Yes
52PQ	53Q 89G 90I	Yes
55R	55R	Yes
55RPD	55R56P57D	
56P	56P	
56PD	56P57D	
66EV	66E67V	
67VG	66E67V70G	
67VT	67V71T	
70GT	67V70G71T	
74EL	74E75L77T	
77T	77T	Yes
86A	86A	
87F	87F	Yes
125G	125G	
130R	130R	
135D	135D	
167R	167R	
182S	182S	Yes
185T	185T	

Eplet Assignments

DQA1*01:02

Eplet	Polymorphic Residues	Antibody Reactivity
2D	2D 199A	Yes
25YT	25Y26T	
40E	40E	Yes
52SK	52S 53K 11C 18F 45A 64R 66M 69A 80Y	Yes
75I	75I 161D 163I	
129QS	129Q130S	
160A	160A	
160AD	160A161D	